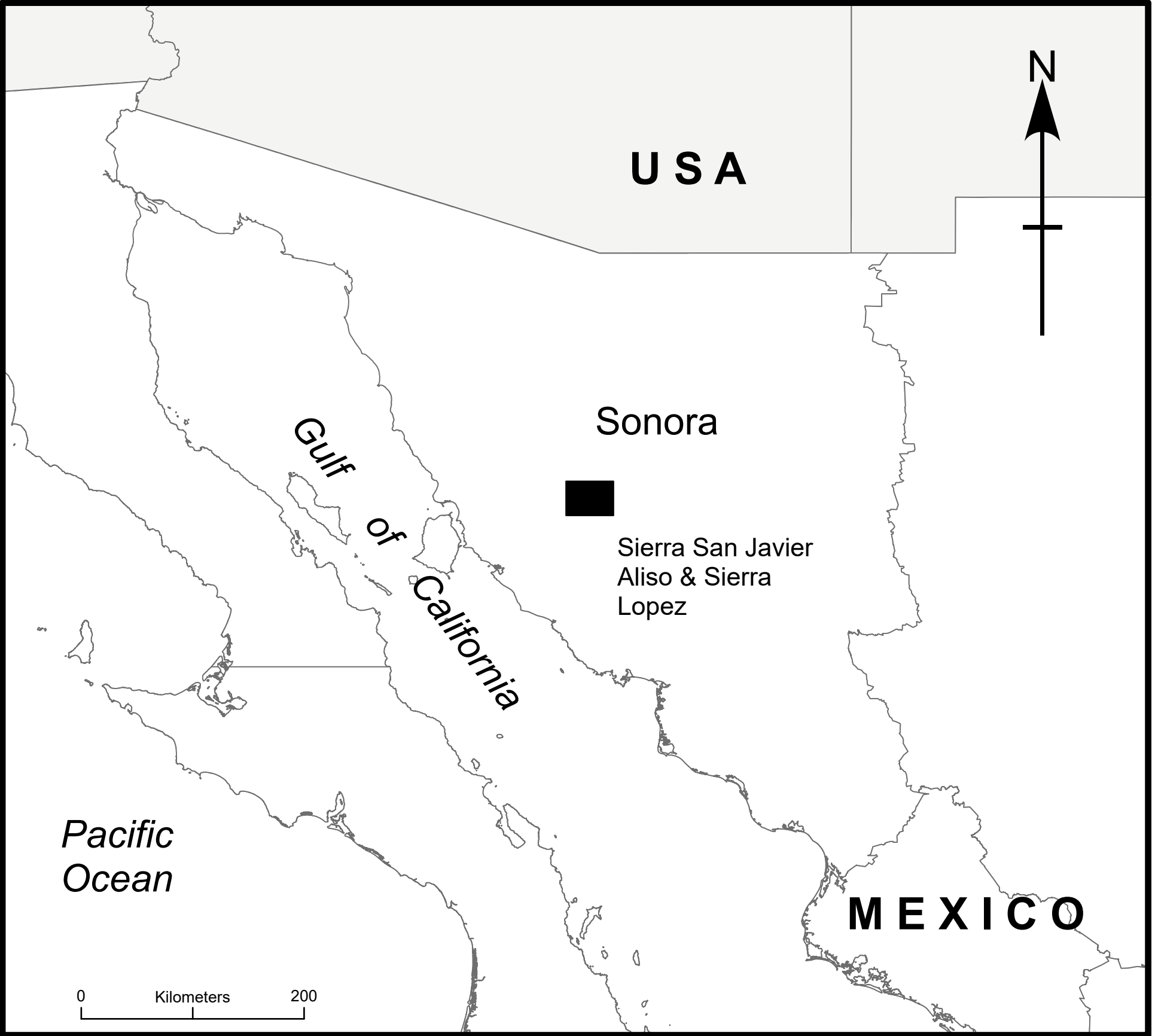
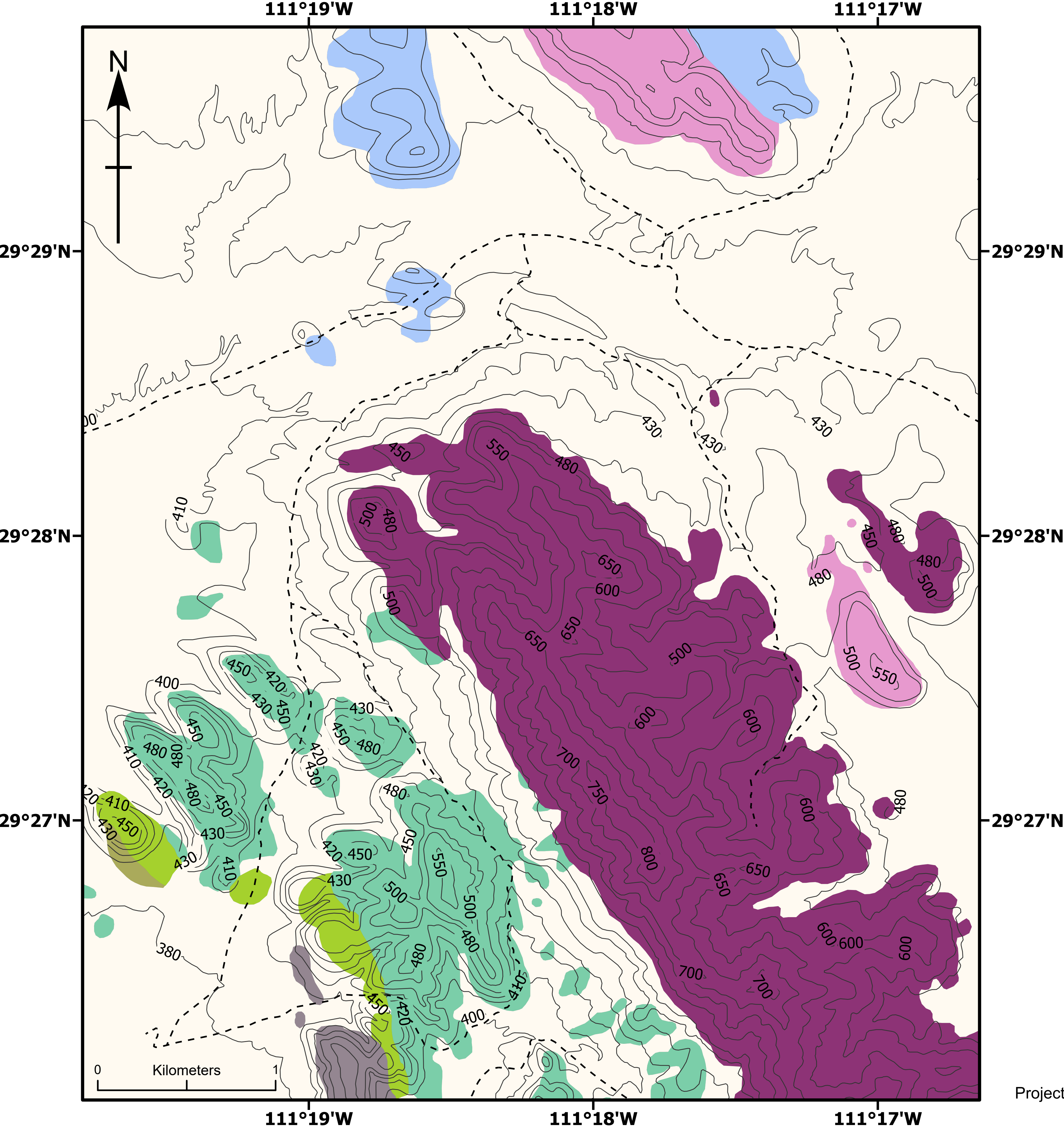


Geologic map of Sierra San Javier Aliso & Sierra Lopez (Sonora). Based on Stewart et al. (1990)



Legend

- Non-differentiated Quaternary rocks
- Tuff and conglomerate (Tertiary)
- Unit 10 (Upper Ordovician)
- Unit 9 (Middle Ordovician)
- Unit 4-8 (Middle and Lower Ordovician)
- Unit 3 (Upper? and Middle Cambrian)
- Unit 2 (Lower Cambrian)
- Unit 1 (Lower Cambrian)
- Dirt road

Projection: WGS 1984 World Mercator (Datum: D WGS 1984, Spheroid: WGS 1984)